

**FINAL EMERGENCY ACTION PLAN**

**WADHAM CREEK DAM (PA-547)**

**DEP I.D. NO. 40-209**

**BOROUGH OF PLYMOUTH**

**LUZERNE COUNTY, PENNSYLVANIA**

**PREPARED FOR**

**PENNSYLVANIA DEPARTMENT OF  
ENVIRONMENTAL PROTECTION  
HARRISBURG, PENNSYLVANIA**

**Updated September 2015**

**EMERGENCY ACTION PLAN**

**SURVEILLANCE, WARNING AND EVACUATION PROCEDURES**

**WADHAM CREEK DAM  
DEP NUMBER 40-209**

**LOCATED IN LUZERNE COUNTY, BOROUGH OF PLYMOUTH**

**LATITUDE 41° 14' 35" LONGITUDE 75° 57' 17"**

**OPERATED BY:   BOROUGH OF PLYMOUTH  
ADDRESS:       162 WEST SHAWNEE AVENUE  
                  PLYMOUTH, PA 18651  
TELEPHONE:     WORK: (570) 779-1011**

**OWNED BY:       BOROUGH OF PLYMOUTH  
ADDRESS:       162 WEST SHAWNEE AVENUE  
                  PLYMOUTH, PA 18651  
TELEPHONE:     WORK: (570) 779-1011**

**DATE: AUGUST 28, 2001**

**REVISED: SEPTEMBER 22, 2015**

## TABLE OF CONTENTS

PROMULGATION AND CONCURRENCE.....	ii
PEMA AND DEP APPROVALS.....	iii
PURPOSE AND SCOPE.....	1
SITUATION.....	1
CONCEPT OF OPERATIONS.....	1
RESPONSIBILITIES AND DUTIES.....	4
ADMINISTRATION AND LOGISTICS.....	8
AUTHORITY AND REFERENCES.....	9
DEFINITIONS.....	10
EXERCISE AND TRAINING.....	13
PLAN MAINTENANCE.....	13

ATTACHMENT A – INUNDATION MAP

ATTACHMENT A-1 – TRAFFIC AND ACCESS CONTROL POINTS

ATTACHMENT B – LOCATION MAP

ATTACHMENT C – TELEPHONE ROSTER

ATTACHMENT D – MEDIA NOTICES

ATTACHMENT E – POSTING NOTICE

## PROMULGATION AND CONCURRENCE

We, the undersigned, on date indicated, have reviewed the requested support activity in support of the Emergency Action Plan for Wadham Creek Dam (PA-547). Our support action will be executed in accordance with existing Standing Operation Procedures and/or municipal or county emergency operation plans.

Barbara Fairchild  
BARBARA FAIRCHILD, BOROUGH OF PLYMOUTH

9/24/15  
DATE

Lucille Morgan  
NANCY SNEE, LUZERNE COUNTY EMA

10/26/2015  
DATE

Earl Cunningham  
EARL CUNNINGHAM, BOROUGH OF PLYMOUTH EMA.

9-28-15  
DATE

Joe Bolesta  
JEROME BOLESTA, PLYMOUTH FIRE CO. NO. 1

10-15-15  
DATE

Robert Meyers  
ROBERT MEYERS, PLYMOUTH FIRE CO. NO.2

9-28-15  
DATE

Myles R. Collins  
MYLES R. COLLINS, PLYMOUTH POLICE DEPT.

9-29-15  
DATE

Robert E. Miller  
ROBERT MILLER, PLYMOUTH AMBULANCE ASSOC.

10-25-15  
DATE

LT. Gary Thomas  
LT. GARY THOMAS, PA STATE POLICE

10/26/15  
DATE

Bill Goldsworthy  
AMY GABRIEL, WYOMING VALLEY RED CROSS  
BILL GOLDSWORTHY

9/28/15  
DATE

Sam Galante  
SAM GALANTE, PENNDOT - DISTRICT 4-3

10-27-15  
DATE

## **PEMA AND DEP APPROVALS**

**The Pennsylvania Emergency Management Agency, hereby finds the Emergency Action Plan contains all the key elements for an effective warning and evacuation plan.**

\_\_\_\_\_  
**Director, PEMA Eastern Regional Office**

\_\_\_\_\_  
**Date**

**The Department of Environmental Protection, Bureau of Waterways Engineering, Division of Dam Safety hereby approves the Emergency Action Plan for Wadham Creek Dam (PA-547).**

\_\_\_\_\_  
**Chief, Division of Dam Safety**

\_\_\_\_\_  
**Date**

## **1. PURPOSE AND SCOPE**

- A. To safeguard the lives as well as to reduce property damage of the citizens living within the dam's potential downstream flood or inundation area.
- B. To provide for effective dam surveillance, prompt notification to local emergency management agencies, citizen warning and evacuation response, when required.
- C. To assign emergency actions to be taken by the dam operator/owner, public officials, emergency personnel, and to outline response by residents in the event of a potential or imminent failure of the dam.

## **2. SITUATION**

- A. The dam is a 30-foot-high, 400-foot-long earth embankment structure constructed for the purpose of collecting debris from the upstream watershed during periods of heavy rainfall. The dam normally impounds no water. The dam impounds approximately 8 acre-feet with the water surface at the crest of the emergency spillway (El. 602.9) and 12 acre-feet with the water surface at the top of the dam (El. 606.0).
- B. The dam is located on Wadham Creek, about one-half mile north of the Susquehanna River and about 150 yards north of West Shawnee Avenue. The right portion of the embankment lies adjacent to the eastern end of First Street. (See Location Map at *Attachment B*).
- C. The inundation area resulting from a sudden dam failure is a narrow band extending from the dam on Wadham Creek across West Shawnee Avenue, along Turner Street and across West Main Street near Stephanie Drive. The inundation area runs down Wadham Creek to the levee along the Susquehanna River and then extends along the levee to its downstream end. (See Inundation Map at *Attachment A*).
- D. Within the inundation area are approximately 100 residents, 40 homes, and 10 businesses. (See Inundation Map at *Attachment A*).

## **3. CONCEPT OF OPERATIONS**

### **A. SURVEILLANCE - (DAM OWNER OR OPERATOR)**

- 1. Normal Conditions

- a. The *Borough of Plymouth-Administrator* will conduct an on-site visual inspection of the dam, the dam's spillway(s), control systems, and the toe area below the dam at a minimum of once every three months. Any abnormal or questionable conditions will be immediately brought to the attention of the owner's engineer and the Division of Dam Safety of DEP.
- b. If any condition is found during a normal inspection which meets or exceeds Section 4.A.2, Responsibilities and Duties - Dam Owner, the *Borough of Plymouth Administrator* will immediately notify the Luzerne County Communications Center 911 and Department of Environmental Protection's Northeast Regional Office.

## 2. Unusual Event Conditions

- a. Possible failure of this dam is most likely to occur during severe thunderstorms, heavy rains with local flood warnings, tropical storms and hurricanes, or heavy rains with frozen ground and/or snow cover.
- b. The *Borough of Plymouth Administrator* will commence 24-hour continuous around-the-clock surveillance of conditions at the dam site when:
  - 1) 8 inches or more of rain occurs in six hours or less, or is predicted by the Weather Service, or
  - 2) The National Weather Service provides public notification that flash floods could occur, or
  - 3) Any conditions listed in paragraph 4.A.2 below are observed during a routine dam maintenance or inspection.
  - 4) Following the occurrence of an earthquake in the general region of the dam.

## 3. Termination of Surveillance

- a. The *Borough of Plymouth Administrator* will terminate 24-hour surveillance of dam site conditions when:
  - 1) The National Weather Service ends a flash flood warning.
  - 2) Heavy rains have ended and the water level in the lake has dropped 4 feet below the top of the dam.

- 3) After personal inspection by a knowledgeable professional engineer of the dam site, following an earthquake, overtopping of the dam, or an evacuation of the inundation area as a result of this EAP, or other serious problems resulting in a notification of a dam site emergency.

#### B. NOTIFICATION

1. The *Borough of Plymouth-Administrator* will initiate the warning notification to the Luzerne County Communications Center 911 and the Department of Environmental Protection's Northeast Regional Office. Warning will be relayed from the Luzerne County Communications Center to all emergency responders.

#### C. WARNING

1. When the situation meets the criteria under the surveillance guidelines presented in Section 4.A.2, indicating a failure of the dam is possible or a significant threat condition is developing, the *Borough of Plymouth Administrator* will relay warning communications to Luzerne County Communications Center 911 and Department of Environmental Protection's Northeast Regional Office.
2. Warning notification will be relayed from the Luzerne County Communications Center 911 to all emergency responders and designated government officials and agencies.
3. Emergency management officials will accomplish the needed actions which are explained in this EAP, in accordance with their existing Standing Operation Procedures and existing municipal or county emergency operation plans.

#### D. EVACUATION

1. Evacuation or pre-evacuation warning of the public may commence upon notification by the Borough of Plymouth-Administrator of a potential or imminent failure of the dam. Emergency responders will initiate action in accordance with plan outline and any existing internal organizational Standing Operation Procedures (SOP), and existing municipal or county operation plans.

### 4. RESPONSIBILITIES AND DUTIES - EMERGENCY RESPONSE

#### A. DAM OWNER (SURVEILLANCE- DAM SITE EMERGENCY)



1. The Borough of Plymouth Administrator will provide for 24-hour on site dam surveillance and monitoring.
2. The Borough of Plymouth Administrator is responsible for determining the dam's threat potential. The following conditions constitute a dam emergency and require notification to the Luzerne County Communications Center 911:
  - a. The water level in the impoundment area has reached the threshold level of *3 feet* below the top the dam.
  - b. The depth of flow in the emergency spillway has reached the depth of *0.1 feet*.
  - c. Imminent failure of this dam might be indicated by observance of one or more of the following conditions at the dam site.
    - 1) The lake or pond level is at or near the top of the dam and water is flowing, or about to flow, over the top of the dam.
    - 2) The overflow pipe or spillway is damaged, clogged with debris or ice, which is resulting in a rapid rise in the lake or pond level.
    - 3) The emergency spillway is experiencing heavy flows which are causing severe erosion to the spillway or the dam embankment.
    - 4) Any structural movement or failure of the concrete (masonry) spillway or the spillway abutment walls.
    - 5) Any sloughing or sliding of the embankment upstream or downstream slope. Also, earth slides in the spillway channel, either upstream or downstream the dam's crest, which could impede the flow in the spillway.
    - 6) Subsidence, sinkholes or cracks found in any part of the dam's embankment or abutting slopes.
    - 7) Any new discharge of water is observed through the dam's embankment or abutting slopes, adjacent to any conduit outlets, or under the dam, which appears as a boil along the downstream toe. Should such a discharge occur and the water is cloudy or muddy in color, then a very serious problem exists.

8) List any other conditions that the owner's engineer knows are a concern for the dam's safety. (None identified.)

3. The *Borough of Plymouth-Administrator* is responsible for initiating warning notification to the Luzerne County Communications Center 911 and Department of Environmental Protection's Northeast Regional Office.

B. LUZERNE COUNTY COMMUNICATIONS CENTER 911

1. The Luzerne County Communications Center will notify (Telephone numbers and points of contact are listed at *Attachment C*):

- a. Luzerne County EMA
- b. Borough of Plymouth Police Department
- c. Borough of Plymouth Fire Company No. 1
- d. Borough of Plymouth Fire Company No. 2
- e. PA State Police - Wyoming Barracks
- f. Borough of Plymouth Ambulance Association
- g. Wyoming Valley West School System
- h. PennDOT District 4-3 (Luzerne County Maintenance Office)

C. LUZERNE COUNTY EMA

1. The Luzerne County EMA will contact the following personnel and agencies (See *Attachment C*):

- a. Borough of Plymouth EMA
- b. Media - Advisory and/or Warning (Activate EAS). Refer to *Attachment D*.

Radio Station WILK - Wilkes-Barre

Radio Station WKRZ - Wilkes-Barre

- c. Luzerne County EOC staff, as necessary

- d. American Red Cross - Wyoming Valley Chapter (when mass care or family assistance is required). Coordinate sheltering per Annex K of County EOP.
  - e. Luzerne County elected officials
  - f. Pennsylvania Emergency Management Agency Eastern Regional Office
2. The Luzerne County EMA will ascertain and report to PEMA any unmet needs requirements.
  3. The Luzerne County EMA will initiate Damage Assessment and Recovery procedures as the situation requires.

#### D. MUNICIPAL EMAs

1. BOROUGH OF PLYMOUTH EMA.
  - a. Notify municipal elected officials.
  - b. Advise municipal services (water, sewer, etc.).
  - c. Keep the County EMA apprised of the situation.
  - d. Coordinate the evacuation (where appropriate).
  - e. Perform initial damage assessment.

#### E. FIRE DEPARTMENTS

1. BOROUGH OF PLYMOUTH FIRE COMPANY NO. 1  
BOROUGH OF PLYMOUTH FIRE COMPANY NO. 2
  - a. Provide citizen notification and route alerting to advise residents living within their jurisdiction (See Inundation Map - *Attachment A*).
  - b. Assist in evacuation.
  - c. Assist police and EMS, as requested.

- d. Provide communications support if feasible and requested.

## F. POLICE SERVICES

### 1. BOROUGH OF PLYMOUTH POLICE DEPARTMENT

- a. Dispatch radio vehicle to dam site in order to provide alternate communications system-Borough of Plymouth Police Department.
- b. Assist evacuation traffic flow and establish traffic control points (TCP) at pre-designated locations (See Inundation Map at *Attachment A*).
- c. Prevent unauthorized entry into emergency areas and establish access control points (ACP) at pre-designated locations (See Inundation Map at *Attachment A*).
- d. Provide assistance with route alerting, if requested.

### 2. PENNSYLVANIA STATE POLICE

- a. Assist evacuation traffic flow and establish traffic control points (TCP) at pre-designated locations (See Inundation Map at *Attachment A*).
- b. Provide assistance with route alerting, if requested.

## G. EMERGENCY MEDICAL SERVICES (EMS)

### 1. BOROUGH OF PLYMOUTH AMBULANCE ASSOCIATION

- a. Provide evacuation transportation assistance and coordinate with designated fire services agencies for transportation of persons with disabilities and any special needs.
- b. Assist fire and police departments as requested.
- c. Provide EMS support to any mass care center as requested.

## H. AMERICAN RED CROSS

### 1. WYOMING VALLEY CHAPTER (If requested by Luzerne County EMA)

- a. Alert person(s) responsible to set-up and operate reception/mass care center at the Wyoming Valley West Senior High School.
- b. Support operations of the reception center and activate mass care center staff.
- c. Maintain operations of reception center/mass care center as requested by EMA officials until final disposition of evacuees is completed.

I. PENNSYLVANIA DEPARTMENT OF TRANSPORTATION (PennDOT)

- 1. Provide services, signs, barricades and guidance on roads and bridges affecting the evacuation and recovery.

**5. ADMINISTRATION AND LOGISTICS**

A. Notices (See *Attachment E*) will be posted at the following public places:

- 1. Borough of Plymouth Building
- 2. Borough of Plymouth Emergency Management Office
- 3. Borough of Plymouth Police Department
- 4. Pennsylvania State Police — Wyoming Barracks
- 5. Borough of Plymouth Fire Company No. 1
- 6. Borough of Plymouth Fire Company No. 2
- 7. Luzerne County Tax Office
- 8. Borough of Plymouth Tax Office

B. The Notice (See *Attachment E*) must state that copies of the Emergency Action Plan for this dam are available for inspection at the following locations (include address):

- 1. Luzerne County Emergency Management Agency Office, 200 North River Street, Wilkes-Barre, PA 18711.

2. Borough of Plymouth Emergency Management Office, 433 West Shawnee Avenue, Plymouth, PA 18651.
  3. Borough of Plymouth Municipal Building, 162 West Shawnee Avenue, Plymouth, PA 18651.
- C. New Notices will be sent to those agencies in paragraph "A" above whenever Plan is revised.

## **6. AUTHORITY AND REFERENCES**

### **A. AUTHORITY**

1. The Dam Safety and Encroachments Act (32 P.S. Sections 693.1-693.27), May 16, 1985.
2. The Pennsylvania Code - Title 25, Chapter 105 Dam Safety and Waterways Management, Section 105.63 and 105.134.
3. Emergency Management Services Code, 35 Pa C.S. Section 7101 et seq., as amended.

### **B. REFERENCES**

1. Emergency Action Planning Guidelines for Dams, Subcommittee on Emergency Action Planning, Inter-agency Committee on Dam Safety, February 1985.
2. Manual for the Inspection, Maintenance and Operation of Dams in Pennsylvania, prepared by the Department of Environmental Protection, Water Management, Bureau of Waterways Engineering, Division of Dam Safety, 1986.
3. Luzerne County Emergency Operations Plan.

## **7. DEFINITIONS**

- A. **ABUTMENT** - The part of the valley's hillside against which the dam abuts. Right and left abutments are those on respective sides of the dam, as an observer looks downstream.

- B. **BOIL** - A disturbance in the surface layer of soil caused by water escaping under pressure from behind a water-retaining structure such as a dam or a levee. The boil may be accompanied by deposition of soil particles (usually sand or silt) in the form of a ring (miniature volcano) around the area where the water escapes.
- C. **BREACH** - An opening or a breakthrough of a dam sometimes caused by rapid erosion of a section of earth embankment by water.
- D. **CONDUIT** - A pipe used to convey water through or around or under a dam.
- E. **CONTROL TOWER** - A structure in the dam or reservoir used to control withdrawal of water from the reservoir through pipes or culverts.
- F. **CREST OF DAM** - The crown of an overflow section of a dam. In the United States, the term "crest of dam" is often used when "top of dam" is intended. To avoid confusion, the terms **crest of spillway** and **top of dam** should be used for referring to the overflow section and dam proper, respectively.
- G. **CULVERT** - (a) A drain or waterway structure built transversely under a road, railway, or embankment. A culvert usually comprises a pipe or a covered channel of box section. (b) A gallery or waterway constructed through any type of dam, which is normally dry but is used occasionally for discharging water; hence the terms scour culvert, drawoff culvert and spillway culvert.
- H. **DAM** - A barrier built across a watercourse for impounding or diverting the flow of water.
- I. **DAM FAILURE** - The uncontrolled release of a dam's impounded water. It is recognized that there are degrees of failure. Any malfunction or abnormality, outside the design assumptions and parameters that adversely affect a dam's primary function of impounding water, is properly considered a failure. Minor malfunctions or abnormalities can result in a sudden failure of a dam.
- J. **EARTH DAM (EARTHFILL DAM)** - An embankment dam in which more than 50% of the total volume is formed of compacted fine-grained earth.
- K. **EMBANKMENT** - Fill material, usually earth or rock, placed with sloping sides.

- L. **EMERGENCY** - A condition of serious nature which develops unexpectedly and endangers the structural integrity of a dam or endangers downstream property and human life. An emergency requires immediate action.
- M. **EMERGENCY ACTION PLAN (EAP)** - A formal plan of procedures designed to minimize consequences to life and property in the event of an emergency at a dam.
- N. **FACE** - With reference to a structure, the external surface that limits the structure, e.g., the face or a wall or dam.
- O. **FAILURE** - An incident resulting in the uncontrolled release of water from an operating dam. See "Dam Failure."
- P. **FOUNDATION OF DAM** - The natural material on which the dam structure is placed.
- Q. **GROIN** - That area along the contact (or intersection) of the face of a dam with the abutment.
- R. **HAZARD** - A situation which creates the potential for adverse consequences such as loss of life, property damage, and adverse social and environmental impacts. Impacts may be for a defined area downstream of a dam from floodwaters released through spillways and outlet works of the dam or waters released by partial or complete failure of the dam. They may also be for an area upstream of the dam from effects of backwater flooding or effects of landslides around the reservoir perimeter.
- S. **INUNDATION AREA** - The downstream area that would be flooded or otherwise affected by the failure of a dam or large flows. This area can be subject to a fast moving flood wave, 20 to 50 MPH is common, with a height of one foot to tens of feet.
- T. **INUNDATION MAP** - A map delineating the area that would probably be flooded in the event of a dam failure. This map must be prepared by a registered professional engineer.
- U. **NOTIFICATION** - To promptly inform appropriate individuals or emergency agency about an emergency condition so they can initiate appropriate actions.
- V. **NORMAL WATER LEVEL (NORMAL WATER POOL)** - For a reservoir with a fixed overflow spillway crest, it is the lowest level of that crest.



- W. **OPERATOR** - The person or position in a company or organization, who is responsible for a dam's operation and surveillance.
- X. **OUTLET** - A constructed opening through which water can be safely discharged for a particular purpose from a reservoir.
- Y. **OWNER** - Any person, authority or agency that manages a dam or reservoir.
- Z. **SEEPAGE** - The movement of water that might occur through the dam, its foundation or its abutments. Small amounts of clear water seepage are normal. An increase in the amount of water flow or change in color is a concern for a dam's safety.
- AA. **SLIDE** - The movement of a mass of earth down a slope. In embankments and abutments, this involves the separation of a portion of the slope from the surrounding materials.
- BB. **SPILLWAY** - A structure over or through which flows are discharged. If the flow is controlled by gates, it is considered a controlled spillway; if the elevation of the spillway crest is the only control, it is considered an uncontrolled spillway.
- CC. **SPILLWAY CHANNEL** - A channel conveying water from the spillway crest to the river downstream.
- DD. **TOE OF DAM** - The junction of the downstream face of a dam with the ground surface. Also referred to as downstream toe. For an embankment dam, the junction of the upstream face with ground surface is called the upstream toe.
- EE. **TOP OF DAM** - The elevation of the uppermost surface of a dam, usually a road or walkway, excluding any parapet wall, railings, etc.

## 8. EXERCISE AND TRAINING

The dam owner will advise and cooperate with the Luzerne County EMA of any exercises scheduled, and coordinate with the Luzerne County EMA to exercise all or portions of this EAP as part of the county's all-hazard exercise program schedule.

## 9. PLAN MAINTENANCE

- A. This Plan will be reviewed every two years by the owner or the owner's engineer.

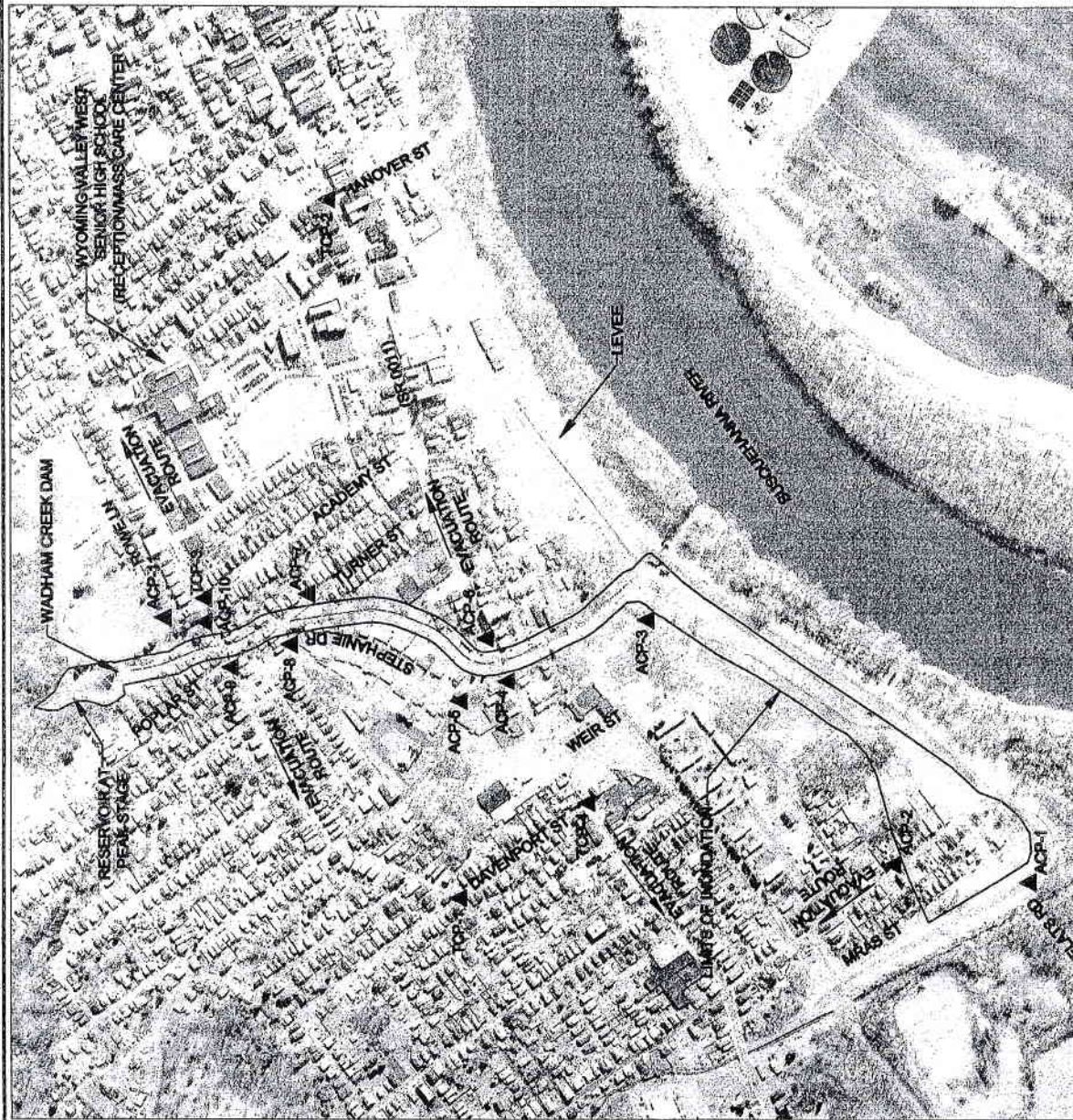
**B. During the two-year review:**

1. The owner's engineer will field review the flood (inundation) area for any increase in downstream development and revise the Inundation Map, if needed.
2. The owner's engineer will review and revise surveillance conditions as needed.
3. The owner will coordinate with Luzerne County EMA if population increase or development within the inundation area could affect the emergency response requirements. If so, a new or revised plan should be developed.
4. The owner will obtain concurrence from emergency response agency officials attesting to their continued understanding of their role(s).
5. The owner will submit revised plan to DEP for approval.

**ATTACHMENTS:**

ATTACHMENT A - INUNDATION MAP  
ATTACHMENT A-1 - TRAFFIC AND ACCESS CONTROL POINTS  
ATTACHMENT B - LOCATION MAP  
ATTACHMENT C - TELEPHONE ROSTER  
ATTACHMENT D - MEDIA ANNOUNCEMENT  
ATTACHMENT E - POSTING NOTICE

**ATTACHMENT A**  
**INUNDATION MAP**



NOTE:  
FOR ADDITIONAL STREET NAMES SEE  
LOCATION MAP AT ATTACHMENT B.



1 inch = 500 ft.

## **ATTACHMENT A-1**

# **TRAFFIC AND ACCESS CONTROL POINTS**



**ATTACHMENT A-1**

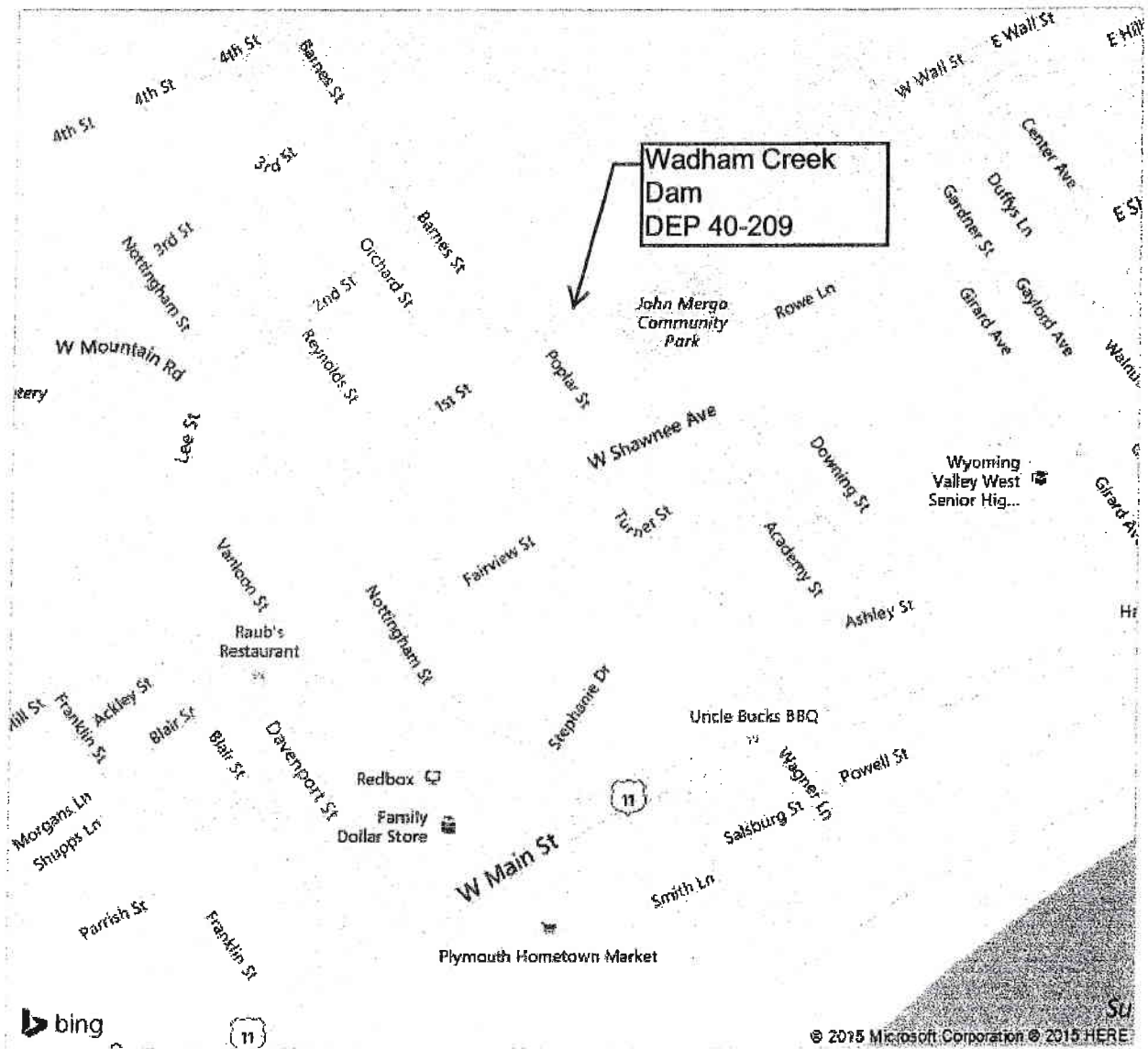
## TRAFFIC AND ACCESS CONTROL POINTS

[illegible]

**ATTACHMENT B**

**LOCATION MAP**

# ATTACHMENT B



**DIRECTIONS:** From State Route 11 (West Main St.) traveling east in Plymouth Borough turn left onto Nottingham Street. Cross West Shawnee Avenue then turn right onto First Street. First Street ends at the right abutment of Wadham Creek Dam.



**ATTACHMENT C**

**TELEPHONE ROSTER**

## TELEPHONE ROSTER

	DAYTIME PHONE NO.	24-HOUR PHONE NO.
DAM OPERATOR: BOROUGH OF PLYMOUTH- ADMINISTRATOR	570-779-1011	911
LUZERNE COUNTY COMMUNICATIONS CENTER	911	911
LUZERNE COUNTY EMA BOROUGH OF PLYMOUTH EMA	570-820-4400 570-779-4901	800-821-3715 911
PLYMOUTH FIRE COMPANY NO. 1 PLYMOUTH FIRE COMPANY NO. 2	570-779-9878 570-779-9778	911 911
PLYMOUTH POLICE DEPARTMENT PENNSYLVANIA STATE POLICE	570-779-2147 570-826-5464	911 570-826-5464
PLYMOUTH AMBULANCE ASSOCIATION	570-779-9878	911
WYOMING VALLEY WEST SCHOOL DISTRICT	570-288-6551	570-288-6551
AMERICAN RED CROSS	570-823-7161	911
DEP REGIONAL OFFICE DEP DAM SAFETY PA. EMERGENCY MANAGEMENT AGENCY EASTERN REGIONAL OFFICE PA. DEPT. OF TRANSPORTATION	570-826-2511 717-787-8568 610-562-3003  570-826-2386	570-826-2511 717-787-4343 610-562-3003  570-826-2386

**ATTACHMENT D**

**MEDIA ANNOUNCEMENT**

**ATTACHMENT D**  
**MEDIA ANNOUNCEMENT**

**WARNING MESSAGE:**

The Luzerne County Emergency Management Agency advises that due to conditions at the Wadham Creek Dam (located near Community Park) in the Borough of Plymouth, the public should avoid the area downstream of the dam. The potentially affected area resulting from the dam on Wadham Creek across West Shawnee Avenue, along Turner Street and across West Main Street near Stephanie Drive. The affected inundation area extends down Wadham Creek to the levee along the Susquehanna River and extends along the levee to its downstream end at Coal Creek. Stay tuned for further information.

\*\*\*REPEAT PERIODICALLY\*\*\*

**EVACUATION MESSAGE:**

The Luzerne County Emergency Management Agency is advising all residents living downstream of the Wadham Creek Dam (located near Community Park) in the Borough of Plymouth to evacuate the area immediately. Evacuate the area extending from the dam on Wadham Creek across West Shawnee Avenue, along Turner Street and across West Main Street near Stephanie Drive. The area to be evacuated extends down Wadham Creek to the levee along the Susquehanna River and then extends along the levee to its downstream end at Coal Creek. If you require shelter during this emergency you should report to Wyoming Valley West Senior High School.

\*\*\*REPEAT PERIODICALLY\*\*\*

**INCIDENT RESOLVED , SAFE TO RETURN:**

The Luzerne County Emergency Management Agency is advising residents of the area downstream of the Wadham Creek Dam (located near Community Park) in the Borough of Plymouth that the problem at the dam has been resolved and that residents may return to their homes.

**\*\*\*REPEAT PERIODICALLY\*\*\***

**NOTE:** The above messages should be modified as necessary to fit the situation.

**ATTACHMENT E**

**POSTING NOTICE**

# NOTICE

WADHAM CREEK DAM HAS BEEN CLASSIFIED BY THE DEPARTMENT OF ENVIRONMENTAL PROTECTION AS A HIGH HAZARD DAM; THIS IS A DAM SO LOCATED AS TO ENDANGER POPULATED AREAS DOWNSTREAM BY ITS FAILURE.

AN EMERGENCY ACTION PLAN HAS BEEN DEVELOPED FOR  
WADHAM CREEK DAM (DEP 40-209)

(NAME OF DAM)

A COPY OF THIS PLAN, INCLUDING AN INUNDATION MAP NOTING AREAS IN  
BOROUGH OF PLYMOUTH

(NAME OF MUNICIPALITY OR MUNICIPALITIES)

SUBJECT TO FLOODING IN THE EVENT OF FAILURE, IS AVAILABLE FOR  
PUBLIC INSPECTION AT THE FOLLOWING LOCATIONS:

BOROUGH OF PLYMOUTH	162 WEST SHAWNEE AVENUE
(DAM OWNER)	PLYMOUTH, PA 18651
	(ADDRESS)

LUZERNE CTY. EMERGENCY MANAGEMENT AGENCY	200 NORTH RIVER STREET
(COUNTY EMA OFFICE)	WILKES-BARRE, PA 18711
	(ADDRESS)

BOROUGH OF PLYMOUTH EMERGENCY MANAGEMENT	433 WEST SHAWNEE AVENUE
(LOCAL EMA OFFICE)	PLYMOUTH, PA 18651
	(ADDRESS)